

LS18 Ryder Fitting Instructions

Read all instructions before starting installation

Brick walls

- Build the wall up as shown in *Figs 1 and 2*. To accommodate the slope of the chute, the bricks will need to be shaped if they are thicker than 100mm or when building a double wall. Before placing the chute on the wall, insert a bead of silicon sealant around the flange. *Fig 6*. Finish building the wall ensuring that the bricks immediately above the chute butt up to both the flange and the container to form a seal with the silicon.
- When the brickwork has set, drill the 4 corner flange fitting holes 45mm deep using a 6mm drill bit. Screw in the 4 concrete screws (C) using a battery drill and the TORX bit supplied. *Fig 4*.
- Insert the 2 shoulder washers (B) onto the socket cap head screws (A) and secure the letter plate to the chute using the 5mm hex key supplied. *Fig 5*.
- Offer the container box over the chute and mark the locations of the securing holes. Remove the container, drill the holes with a 5.5mm drill and insert the rawl plugs. Seal any gaps between the chute and the brick wall with silicon. *Fig 7*. Place a bead of silicon around the chute hole and the top and sides of the collection box, do not seal the bottom edge. *Fig 8*. Locate the collection box over the chute and secure using the screws provided. Ensure that the silicon bead between the wall and container makes a good seal. Finally seal around the top and sides where the collection box meets the wall. Do not seal the bottom edge.

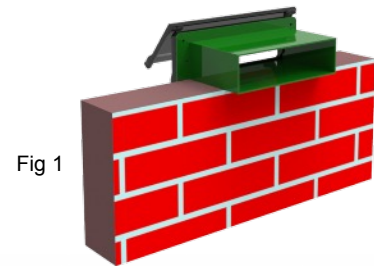


Fig 1

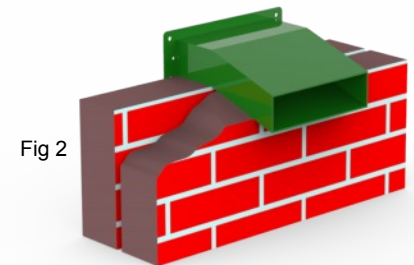


Fig 2

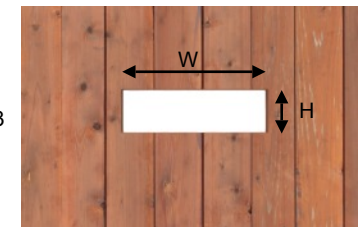


Fig 3

Wooden gates and fences

- Cut a hole for the letter plate in the required position. The hole should be 249mm wide (W) and 74mm high (H) *Fig 3*. This allows a 2mm tolerance around all sides.
- Apply a bead of silicon around the flange of the chute *Fig 6* then secure to the fence or gate using the 4 screws provided, *Fig 4*
- Insert the 2 shoulder washers (B) onto the socket cap head screws (A) and secure the letter plate to the chute using the 5mm hex key supplied. *Fig 5*.
- Place a bead of silicon around the chute hole and the top and sides of the collection box, do not seal the bottom edge. *Fig 8*. Locate the collection box over the chute and secure using the screws provided.
- Ensure that the silicon bead between the fence and container makes a good seal. Finally seal around the top and sides where the collection box meets the fence. Do not seal the bottom edge.



Fig 4



Fig 5

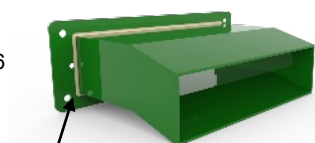


Fig 6

Silicon Sealant

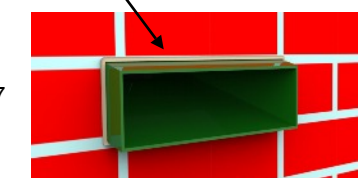


Fig 7

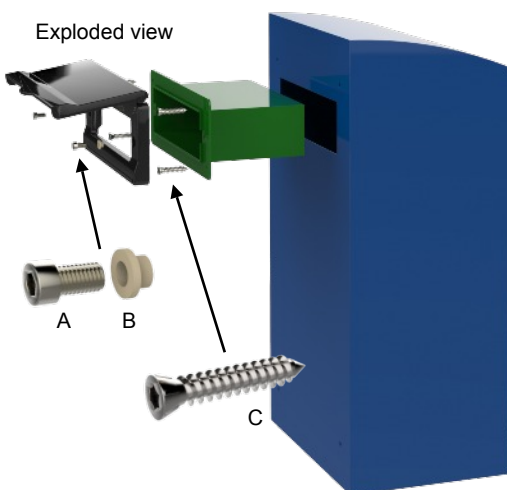


Fig 8

