

LS13 Orwell *fitting instructions*

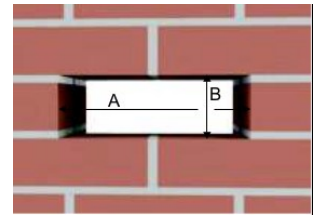


Front face of brickwork

Cut out the brickwork at the location of the letter plate (or leave a gap if building the wall).

Dimension A = 260mm

Dimension B = 88mm



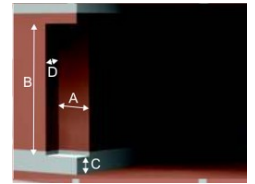
Cut a notch in the brickwork either side of the front opening.

Dimension A= 18mm

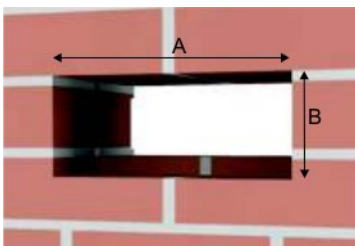
Dimension C= 8mm

Dimension B= 62mm

Dimension= 10mm



Rear of brickwork

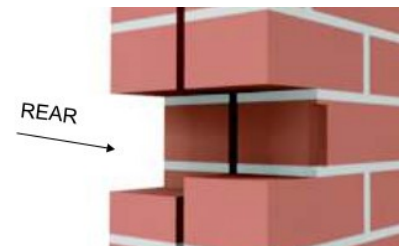


Cut out brickwork (or leave a gap if building the wall)

Dimension A= 260mm

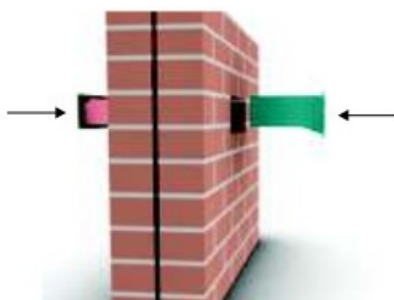
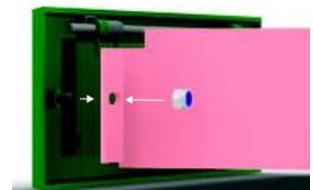
Dimension B= 108mm

Note that the tops and sides of the cut outs should be aligned, the bottom of the rear opening extends 20mm below the bottom of the front opening.



Assembly

Position the front chute over the studs on the letter plate and secure with the 2 nyloc nuts. Note the orientation of the chute, the larger gap is at the top. DO NOT OVERTIGHTEN THE NUTS



With the help of an assistant, slide the front chute assembly through the hole made in the brickwork.

Carefully slide the rear section through the brickwork and over the front section.

Secure the front and rear sections together using the bolts and nylon washers provided. DO NOT OVERTIGHTEN THE BOLTS



From the back, run a bead of clear silicon along the joint of the front and rear sections.

Finishing off

On the front wall, run a bead of clear silicon between the top and sides of the letter plate and the brickwork